



Southwestern HWY 115 Fire Protection District, (CO) Water Supply #1288

Chassis

Cab: Freightliner M2-106

Engine: Cummins L9

Transmission: Allison 3000 EVS

Wheelbase: 182"

Body

Material: Aluminum

Body Length: 13' - 8"

Overall Height: 10' - 6"

Overall Length: 26'

Features

Waterous CLVK 500-GPM, Single-Stage Fire Pump

Front Bumper Sweep Nozzles

Newton Kwik-Dump 1010-34

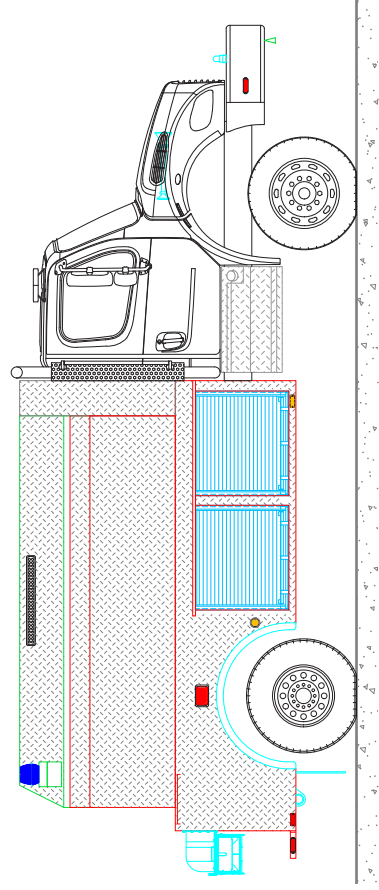
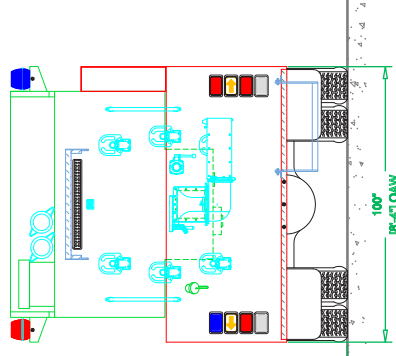
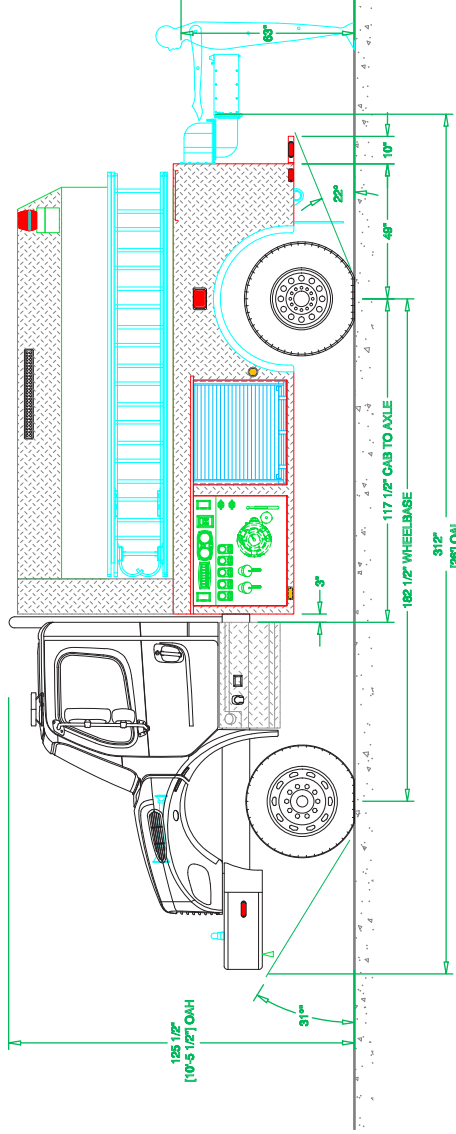
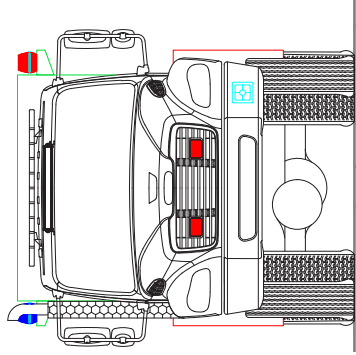
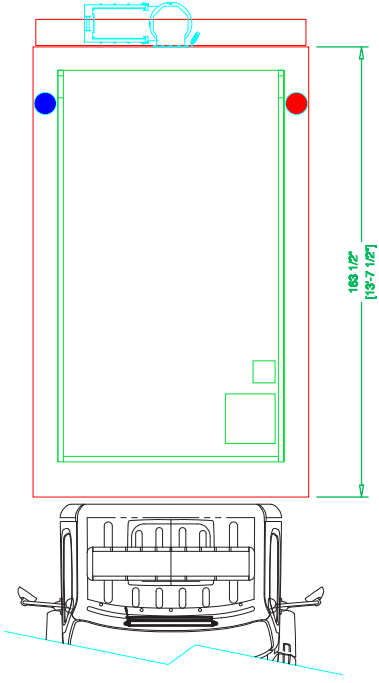
Porta-Tank Slide-In Storage

Cast Products Exterior Ladder Bracket Assemblies

OnScene Solutions Access LED Lighting

Hannay SBEF Series Booster Hose Reel

R•O•M Series IV Roll-Up Doors



See more at svitrucks.com