



Boulder County Hazmat Authority, Boulder (CO) Walk-In Hazmat #1267

Chassis

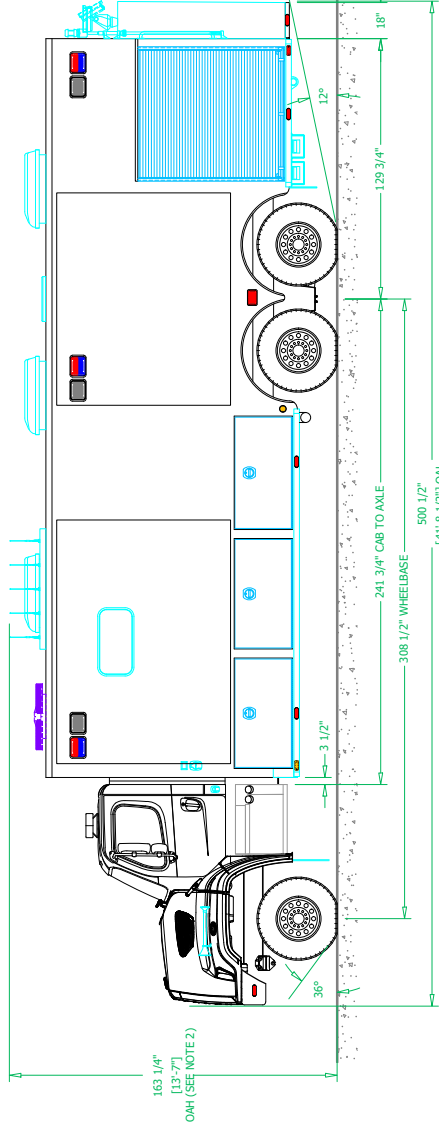
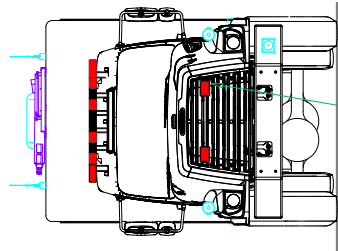
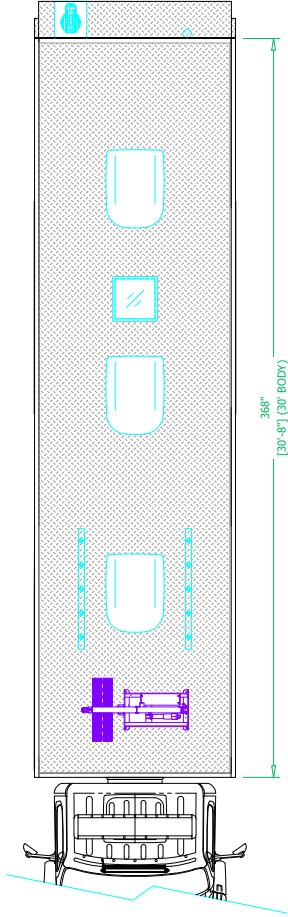
Cab: Freightliner M2 108 SD
Engine: Cummins L9 400EV
Transmission: Allison 3000 EVS
Wheelbase: 309"

Body

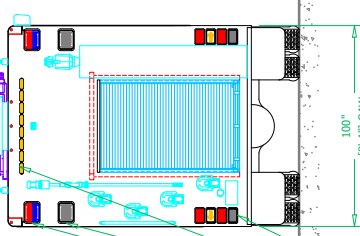
Material: Aluminum
Body Length: 30'
Overall Height: 13' - 7"
Overall Length: 41' - 9"

Features

Interior Command Center
(2) Samsung 43" Flat Panel LCD Screens
(2) Slideout Room Extensions
(1) Carefree SlideOut Kover III Awning
(2) Communication and Electronics Consoles
(1) Dometic Refrigerator Drawer
Interior Bench Seat Storage Compartments
Command Light Shadow Series Light Tower
OnScene Solutions Access Pro LED Lighting
OnScene Solutions Rough-Service LED Lights
ROM Series IV Roll-Up Doors



- FOUR (4) WHELEN 600
RED LED - BLACK
TWO (2) EACH SIDE
- SIX (6) WHELEN 900
SCENE - BLACK
THREE (3) EACH SIDE
- SIX (6) WHELEN 900
RED/BLUE LED - BLACK
THREE (3) EACH SIDE
- TEN (10) WHELEN 100
RED LED - CHROME
FIVE (5) EACH SIDE



- TWO (2) WHELEN 900
RED/BLUE LED - BLACK
- TWO (2) WHELEN 900
SCENE - BLACK
- EIGHT (8) WHELEN 100
AMBER LED - BLACK
- TWO (2) WHELEN 600
RED LED - WARNING
- TWO (2) WHELEN 600
AMBER LED - TURN
- TWO (2) WHELEN 600
RED LED - BRAKE
- TWO (2)
CLEAR

